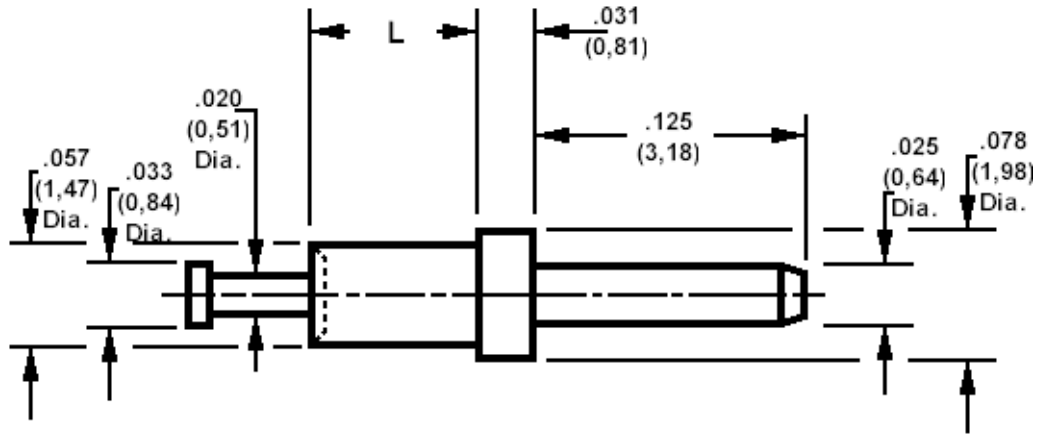


## 460-3202 Swage mount, .025 (0,64) diameter pin

Recommended mounting hole .061 (1,57) ± .002 (0,05)



### How to order code

**460-3202-XX-YY--00**

Basic Part No XX= L dimension, YY = Plating Finish

### MATERIALS

Component	Material	Finish (-03)	Finish (-04)
Pin	Brass	Gold over Nickel	Electro-tin over copper

### DIMENSIONS (XX)

Basic Part Number	(XX)	L	Board Thickness
460-3202	-01	.051 (1,30)	.031 (0,79)
	-02	.081 (2,08)	.061 (1,57)
	-03	.112 (2,87)	.094 (2,39)